

# INDOFINE Chemical Company, Inc.

121 Stryker Lane, Bldg. 30, Suite 1 • Hillsborough, NJ 08844 • U.S.A.

Phone: (908) 359-6778 • FAX: (908) 359-1179

website: [www.indofinechemical.com](http://www.indofinechemical.com)

e-mail: [chemical@indofinechemical.com](mailto:chemical@indofinechemical.com)

## CERTIFICATE OF ANALYSIS

Catalog Number: H-030

Product Name: **2'-HYDROXY-5'-METHOXYACETOPHENONE**

CAS Number: [705-15-7]

Lot Number: 1507621

Chemical Formula: C<sub>9</sub>H<sub>10</sub>O<sub>3</sub>

Molecular Weight: 166.18

Melting Point: 49-51°C

Appearance: Yellow crystalline powder

Moisture(KF): 0.26%

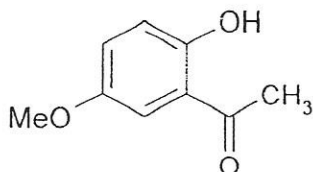
Solubility: Soluble in Chloroform/Methanol

TLC: Hexane:Ethyl acetate (7:3)

NMR Spectrum: Enclosed (conforms to the structure)

Storage: Store in a cool, dry place

Purity(HPLC): 99.91%





# INDOFINE Chemical Company, Inc.

121 Stryker Lane, Bldg. 30, Suite 1 • Hillsborough, NJ 08844 • U.S.A.

Phone: (908) 359-6778 • FAX: (908) 359-1179

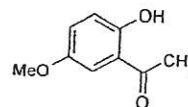
website: [www.indofinechemical.com](http://www.indofinechemical.com)

e-mail: [chemical@indofinechemical.com](mailto:chemical@indofinechemical.com)

## HPLC ANALYSIS

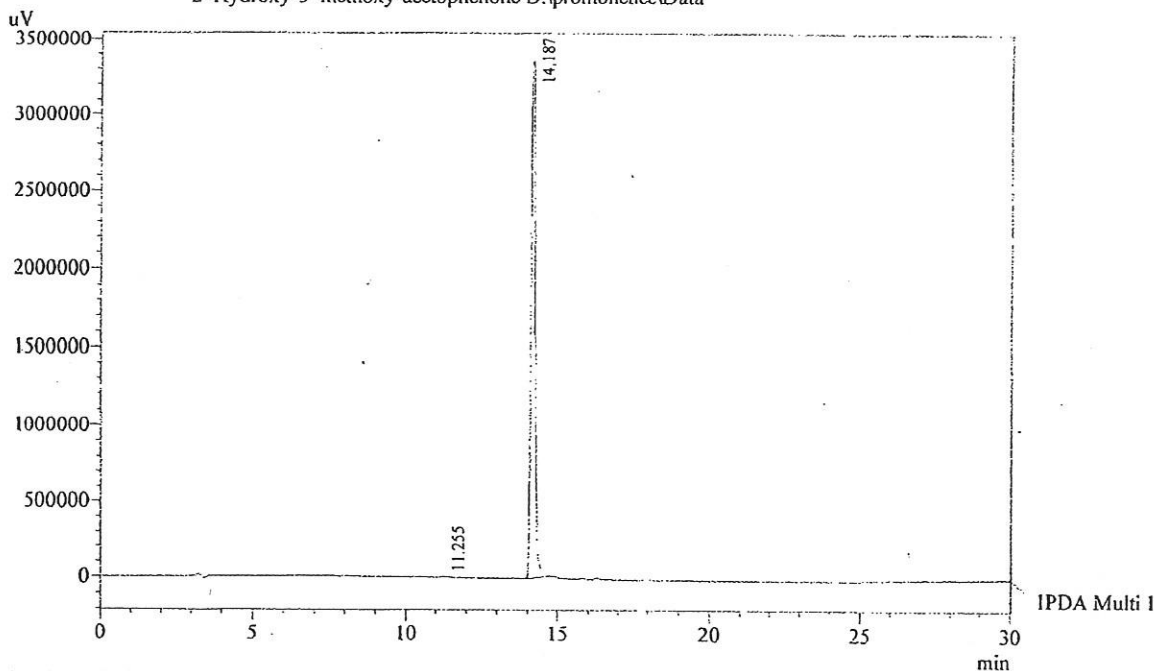
Acquired by : Admin  
Sample Name : 2'-Hydroxy-5'-methoxy-acetophenone  
Sample ID : 80 kg Lot  
Injection Volume : 20 uL  
Data Filename : 260615B.lcd  
Method Filename : Linear Gradient.M.lcm

Catalog No.: H-030  
Product Name: 2'-Hydroxy-5'-methoxyacetophenone  
Lot No.: 1507621



Column : LUNA C-18, (250mm x4.6mm 5.0μ)  
Flow : 1.000 mL/min.  
Mobile Phase : A(0.05% TFA in Water) B(Acetonitrile)  
0.01 90 10  
12.0 10 90  
20.0 10 90  
23.0 90 10  
30.0 90 10  
Diluent : Acetonitrile

Chromatogram  
2'-Hydroxy-5'-methoxy-acetophenone D:\promonence\Data



I PDA Multi 1 / 230nm 4nm

PeakTable

PDA Ch1 230nm 4nm

Peak#	Name	Ret. Time	Area	Area %	Relative Retention Time
1	2',5'-DiOH ACP	11.255	30134	0.09	0.79
2	2'-OH-5'-OMe ACP	14.187	34020410	99.91	1.00
Total			34050544	100.00	



# INDOFINE Chemical Company, Inc.

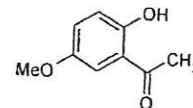
121 Stryker Lane, Bldg. 30, Suite 1 • Hillsborough, NJ 08844 • U.S.A.

Phone: (908) 359-6778 • FAX: (908) 359-1179

website: [www.indofinechemical.com](http://www.indofinechemical.com)

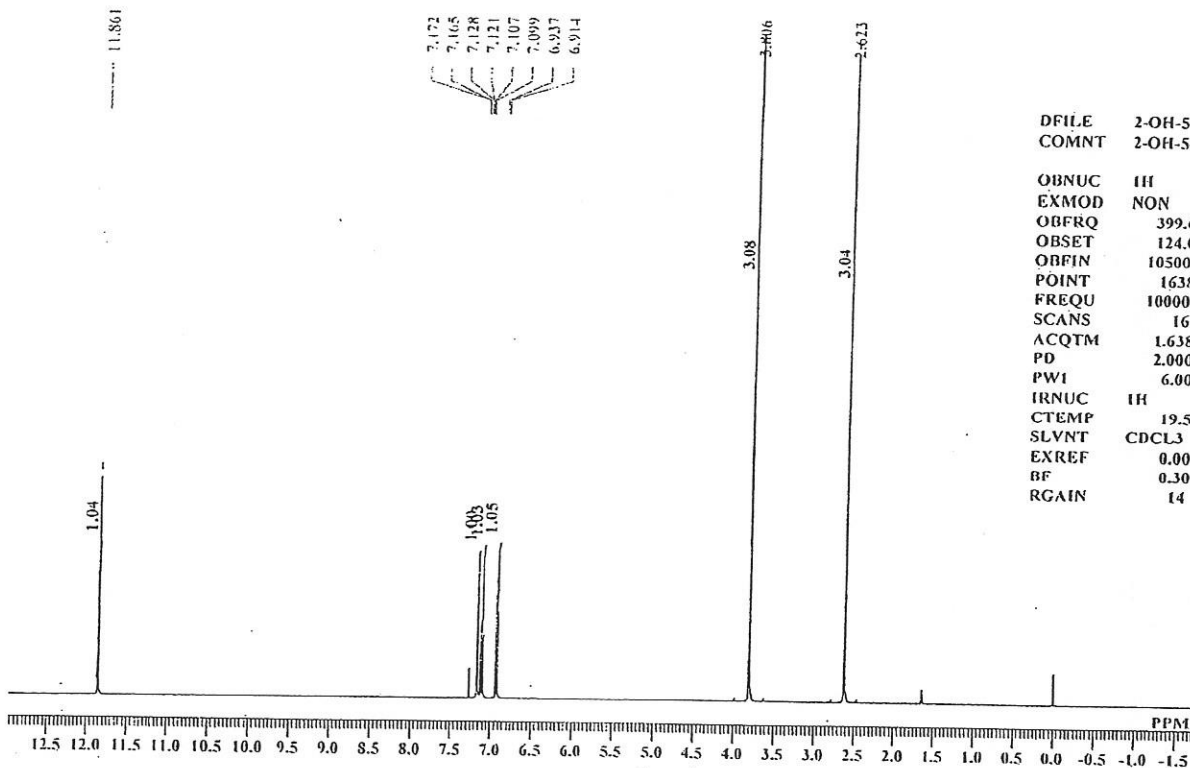
e-mail: [chemical@indofinechemical.com](mailto:chemical@indofinechemical.com)

Catalog No.: H-030  
Product Name: 2'-Hydroxy-5'-methoxyacetophenone  
Lot No.: 1507621



2-OH-5-OMe A.P-80Kg lot 1H NMR CDCL<sub>3</sub>

Analysed By : GRJ



DFILE 2-OH-5-OMe A.P-80Kg lot 1H.als  
COMNT 2-OH-5-OMe A.P-80Kg lot 1H N

OBNUC 1H  
EXMOD NON  
OBFRQ 399.65 MHz  
OBSET 124.00 KHz  
ORFIN 10500.00 Hz  
POINT 16384  
FREQU 10000.00 Hz  
SCANS 16  
ACQTM 1.6384 sec  
PD 2.0000 sec  
PWI 6.00 usec  
IRNUC 1H  
CTEMP 19.5 c  
SLVNT CDCL<sub>3</sub>  
EXREF 0.00 ppm  
BF 0.30 Hz  
RGAIN 14



# INDOFINE Chemical Company, Inc.

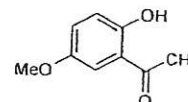
121 Stryker Lane, Bldg. 30, Suite 1 • Hillsborough, NJ 08844 • U.S.A.

Phone: (908) 359-6778 • FAX: (908) 359-1179

website: [www.indofinechemical.com](http://www.indofinechemical.com)

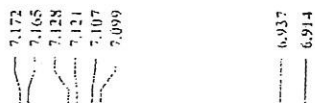
e-mail: [chemical@indofinechemical.com](mailto:chemical@indofinechemical.com)

Catalog No.: H-030  
Product Name: 2'-Hydroxy-5'-methoxyacetophenone  
Lot No.: 1507621



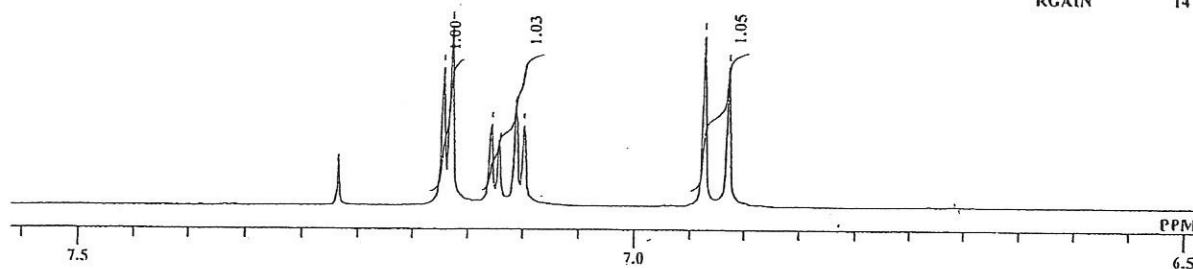
2-OH-5-OMe A.P-80Kg lot 1H NMR CDCl3

Analysed By: GRJ



DFILE: 2-OH-5-OMe A.P-80Kg lot 1H.nls  
COMNT: 2-OH-5-OMe A.P-80Kg lot 1H NMR

OBNUC: 1H  
EXMOD: NON  
OBFRQ: 399.65 MHz  
OBSET: 124.00 KHz  
OBFIN: 10500.00 Hz  
POINT: 16384  
FREQU: 10000.00 Hz  
SCANS: 16  
ACQTM: 1.6384 sec  
PD: 2.0000 sec  
PWI: 6.00 usec  
IRNUC: 1H  
CTEMP: 19.5 c  
SLVNT: CDCL3  
EXREF: 0.00 ppm  
BF: 0.30 Hz  
RGAIN: 14



# ICC INDOFINE Chemical Company, Inc.

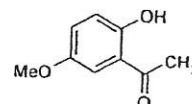
121 Stryker Lane, Bldg. 30, Suite 1 • Hillsborough, NJ 08844 • U.S.A.

Phone: (908) 359-6778 • FAX: (908) 359-1179

website: [www.indofinechemical.com](http://www.indofinechemical.com)

e-mail: [chemical@indofinechemical.com](mailto:chemical@indofinechemical.com)

Catalog No.: H-030  
Product Name: 2'-Hydroxy-5'-methoxyacetophenone  
Lot No.: 1507621



PEAK 11  
MIXINT 177.8353424  
RESOL 0.6103516 HZ  
RESOL 0.0015267 PPM  
EXREF 0.0000000 PPM  
OBS -8989.26 HZ  
ABOBS 399784.5000000 KHZ  
NGAIN 1  
COMNT DMB 10010615 1H NMR CDCl3

NO.	PPM	INT(%)	FREQU(HZ)	J(HZ)	POSITION	BAR GRAPH
1	7.06256	1.41750	2823.486	-----	6834	
2	7.04882	5.81638	2817.993	5.493	6843	+
3	7.04271	9.33439	2815.552	2.441	6847	+
4	7.02744	6.74920	2809.448	6.104	6857	+
5	7.02133	10.98868	2807.007	2.441	6861	++
6	6.98317	15.91481	2791.748	15.259	6886	+++
7	6.97859	15.80958	2789.917	1.831	6889	+++
8	6.74958	14.00260	2698.364	91.553	7039	++
9	6.72821	12.35586	2689.819	8.545	7053	++
10	3.87021	92.33774	1547.241	1142.578	8925	+++++
11	3.85952	100.00000	1542.969	4.272	8932	+++++



# INDOFINE Chemical Company, Inc.

121 Stryker Lane, Bldg. 30, Suite 1 • Hillsborough, NJ 08844 • U.S.A.

Phone: (908) 359-6778 • FAX: (908) 359-1179

website: [www.indofinechemical.com](http://www.indofinechemical.com)

e-mail: [chemical@indofinechemical.com](mailto:chemical@indofinechemical.com)

## LC-MS ANALYSIS

Sample Name : 2-OH-5OMe-A.P  
B Number : 80 Kg Lot  
User Id : BKR

Catalog No.: H-030  
Product Name: 2'-Hydroxy-5'-methoxyacetophenone  
Lot No.: 1507621

Acquired Time : 09:35:49

Method Parameters : Column : Inertsil ODS-3V, 250 X 4.6 mm, 5 µm

Mobile Phase -A : 0.05% TFA in Water

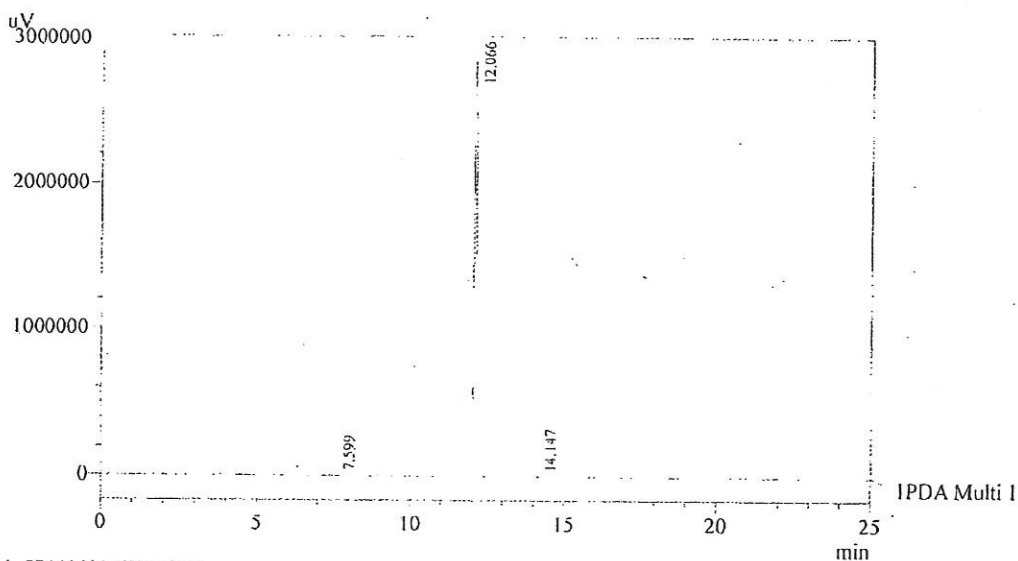
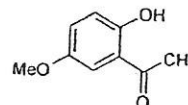
Mobile Phase -B : Acetonitrile

Flow Rate: 1.0 mL/min

T(min) : 0.01, 12.0, 20.0, 23.0, 25.0

B(%) : 90, 10, 10, 90, 90

Sample Preparation : 10 mg/50mL in Acetonitrile



1 PDA Multi I / 230nm 8nm

PDA Ch1 230nm 8nm

Peak#	Ret. Time	Area	Resolution	Theoretical Plate#	Area %
1	7.599	18903	0.000	13159.198	0.109
2	12.066	17330499	20.729	84499.872	99.829
3	14.147	10721	12.827	127644.800	0.062
Total		17360123			100.000



# INDOFINE Chemical Company, Inc.

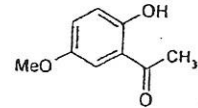
121 Stryker Lane, Bldg. 30, Suite 1 • Hillsborough, NJ 08844 • U.S.A.

Phone: (908) 359-6778 • FAX: (908) 359-1179

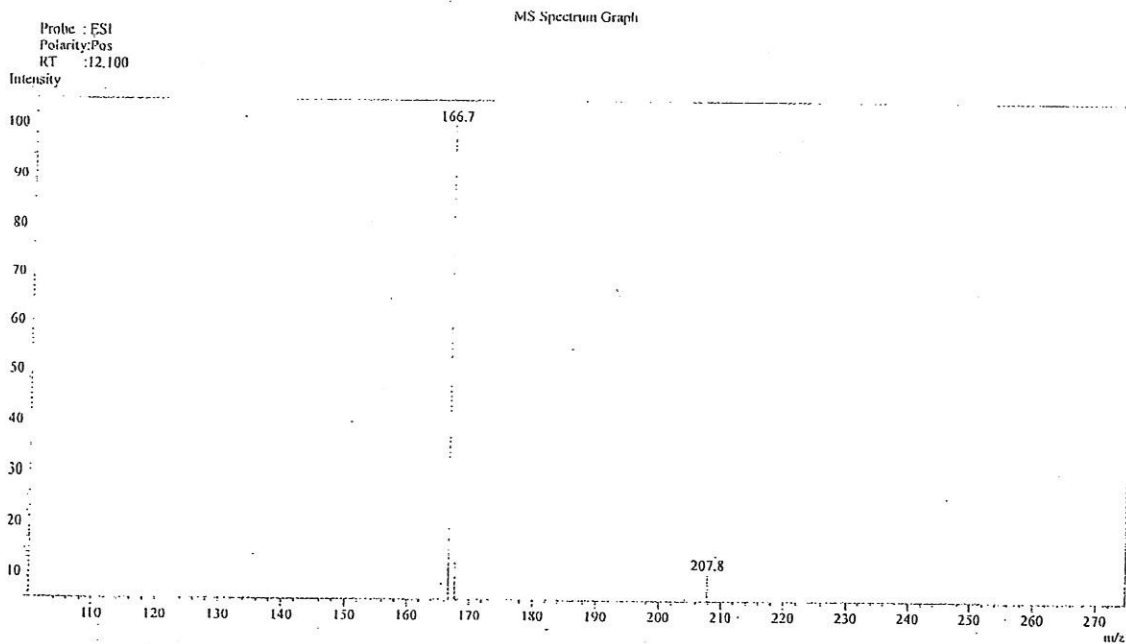
website: [www.indofinechemical.com](http://www.indofinechemical.com)

e-mail: [chemical@indofinechemical.com](mailto:chemical@indofinechemical.com)

Catalog No.: H-030  
Product Name: 2'-Hydroxy-5'-methoxyacetophenone  
Lot No.: 1507621



Sample Information  
Sample Name : 2-OH-5OMe-A.P  
AR Number : 80 Kg Lot  
Data File : 2-OH-5OMe-A.P.tcd  
Acquired by : BKR



# ICG INDOFINE Chemical Company, Inc.

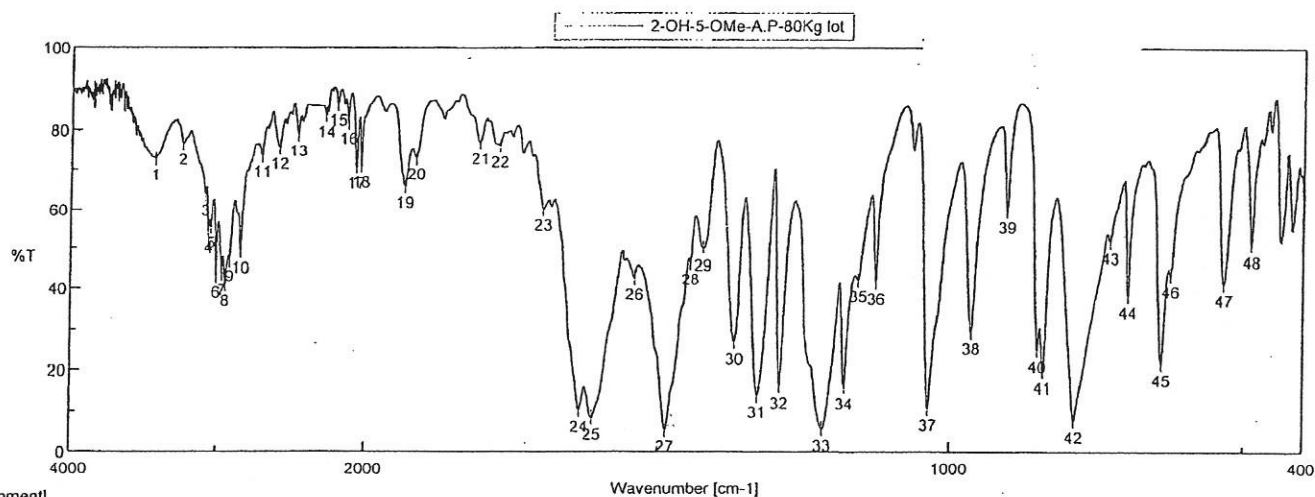
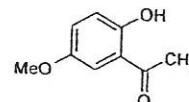
121 Stryker Lane, Bldg. 30, Suite 1 • Hillsborough, NJ 08844 • U.S.A.

Phone: (908) 359-6778 • FAX: (908) 359-1179

website: [www.indofinechemical.com](http://www.indofinechemical.com)

e-mail: [chemical@indofinechemical.com](mailto:chemical@indofinechemical.com)

Catalog No.: H-030  
 Product Name: 2'-Hydroxy-5'-methoxyacetophenone  
 Lot No.: 1507621



[Comment]  
 Sample Name 2-OH-5-OMe-A.P-80Kg lot  
 Comment KBr Pellet  
 User DRNP  
 Division QC

[Data Information]

Data array type Linear data array  
 Horizontal Wavenumber [cm-1]  
 Vertical %T  
 Start 349.053 cm-1  
 End 7800.65 cm-1  
 Data pitch 0.964233 cm-1  
 Data points 7729

Result of Peak Picking

No.	Position	Intensity	No.	Position	Intensity	No.	Position	Intensity	No.	Position	Intensity
1	3420.1	72.708	2	3236.0	76.638	3	3083.6	63.799	4	3062.4	54.077
5	3007.4	42.934	6	2999.9	73.458	7	2968.9	43.600	8	2944.8	40.940
9	2699.9	73.458	10	2120.3	81.919	11	2120.3	81.919	12	2582.2	75.532
13	2120.3	81.919	14	2120.3	81.919	15	2064.4	70.562	16	2064.4	70.562
17	2064.4	70.562	18	1805.0	76.751	19	1805.0	76.751	20	1771.3	76.003
21	1805.0	76.751	22	1771.3	76.003	23	1771.3	76.003	24	1696.1	59.923
25	1771.3	76.003	26	1540.8	42.512	27	1486.8	5.375	28	1445.4	46.290
29	1540.8	42.512	30	1486.8	5.375	31	1486.8	5.375	32	1423.2	49.717
33	1486.8	5.375	34	1329.7	13.913	35	1329.7	13.913	36	1329.7	13.913
37	1329.7	13.913	38	1127.2	41.313	39	1127.2	41.313	40	1181.2	15.994
41	1127.2	41.313	42	1127.2	41.313	43	1181.2	15.994	44	903.5	59.274
45	1127.2	41.313	46	839.8	19.712	47	839.8	19.712	48	839.8	19.712
49	839.8	19.712	50	839.8	19.712	51	786.8	7.691	52	786.8	7.691
53	839.8	19.712	54	786.8	7.691	55	786.8	7.691	56	726.1	51.533
57	786.8	7.691	58	786.8	7.691	59	726.1	51.533	60	695.2	38.017
61	786.8	7.691	62	726.1	51.533	63	695.2	38.017	64	695.2	38.017
65	726.1	51.533	66	695.2	38.017	67	695.2	38.017	68	638.3	21.539
69	695.2	38.017	70	638.3	21.539	71	638.3	21.539	72	638.3	21.539
73	638.3	21.539	74	638.3	21.539	75	638.3	21.539	76	638.3	21.539
77	638.3	21.539	78	638.3	21.539	79	638.3	21.539	80	638.3	21.539